



Beaufort County Public Works
Stormwater Infrastructure
Project Summary

Project Summary: St. Helena Drop Off Center

Activity: Routine/Preventive Maintenance

Duration: 07/10/19-07/11/19

Narrative Description of Project:

Project improved 1,858 L.F. of drainage system. Cleaned out 1,858 L.F. of channel.

2020-001 / St. Helena Drop off Center

	Labor Hours	Labor Cost	Equipment Cost	Material Cost	Contractor Cost	Indirect Labor	Total Cost
AUDIT / Audit Project	1.0	\$21.79	\$0.00	\$0.00	\$0.00	\$0.00	\$21.79
CCO / Channel - cleaned out	48.0	\$1,044.16	\$233.16	\$58.50	\$0.00	\$475.20	\$1,811.02
HAUL / Hauling	10.0	\$229.90	\$141.60	\$32.76	\$0.00	\$0.00	\$404.26
2020-001 / St. Helena Drop Off Center Sub Total	59.0	\$1,295.85	\$374.76	\$91.26	\$0.00	\$475.20	\$2,237.07
Grand Total	59.0	\$1,295.85	\$374.76	\$91.26	\$0.00	\$475.20	\$2,237.07

Before



During



After



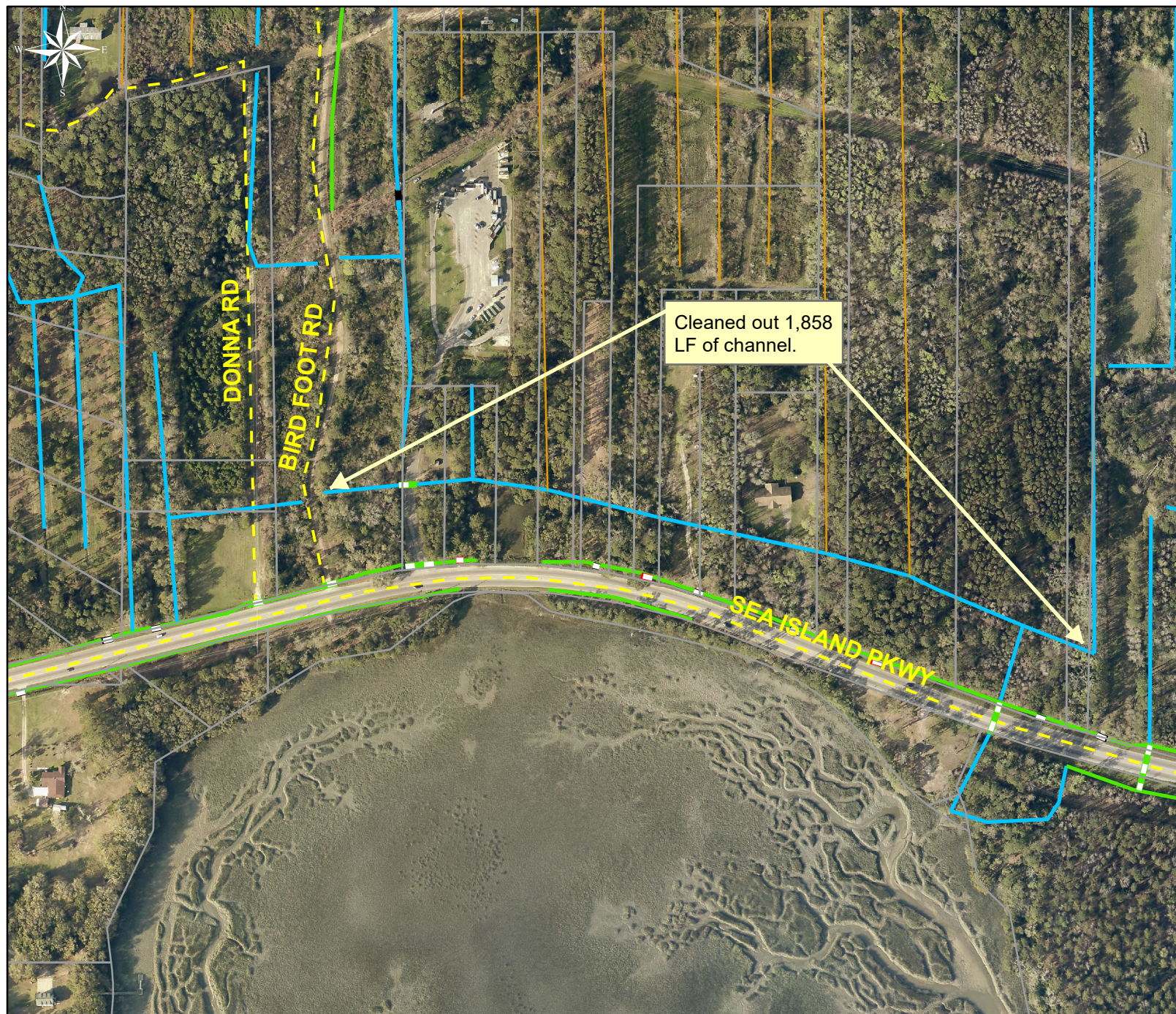
Project: St. Helena
Drop Off Center

Activity: Routine/
Preventive
Maintenance

Project #:
2020-001

Township/SW Dist:
St Helena Island/8

Completed:
July 2019



Legend

Drainage Type

- Access Pipe
- Bleeder Pipe
- Channel Pipe
- Channel
- Stream
- Crossline Pipe
- Driveway Pipe
- Lateral
- Lateral Pipe
- River
- Road Pipe
- Roadside
- Roadside Pipe

0 80 160 320 480 640
Feet

1 inch = 330 feet

Prepared By: BC Stormwater Management Utility

Date Print: 08/14/19

File: C:\project summaries map\St. Helena Drop Off Center_2020-001